



2024 NFHS SOFTBALL RULES POWERPOINT

National Federation of State
High School Associations



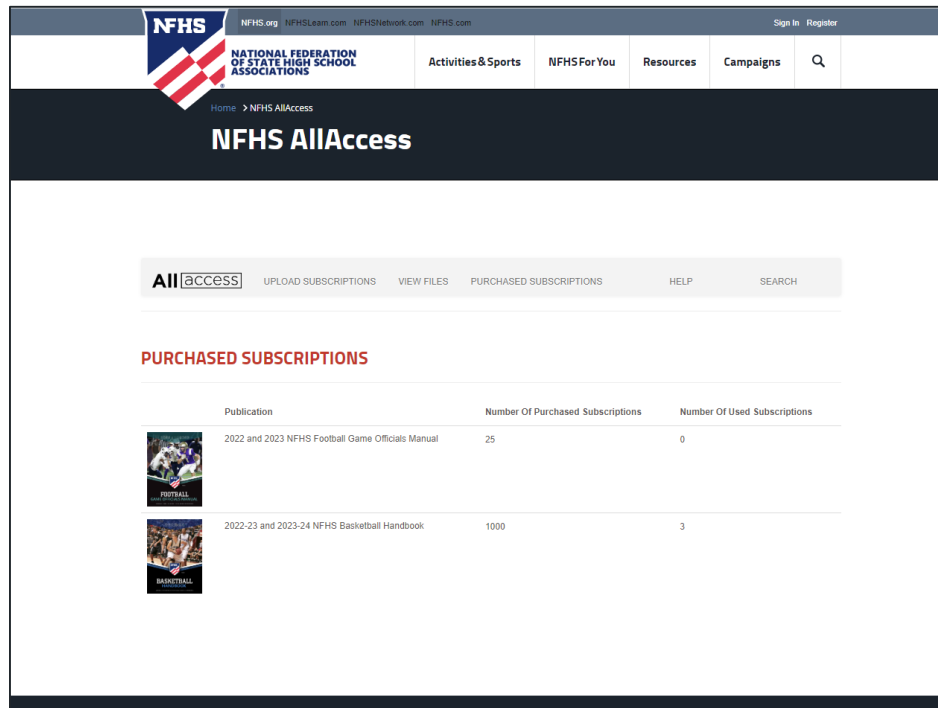
Rules changes
Major Editorial Changes
Points of Emphasis

Copyright© 2023 National Federation of State High School Associations. All Rights Reserved.

This copyrighted power point is presented by the NFHS. This material shall only be reproduced or distributed by member state associations for teaching and training purposes.

Distribution to the public is prohibited without the express written consent from the NFHS. Please contact Davis Whitfield, COO at dwhitfield@nfhs.org with requests.

NEW NFHS AllAccess – WEBSITE



- AllAccess is the **New NFHS Digital Publications Platform** that includes:
 - Rules Publications
 - High School Today Magazine
 - Policy Debate Quarterlies
 - Other NFHS Digital Publications
- Website organized for associations and individuals to assign books and manage purchases
- Visit www.allaccess.nfhs.org



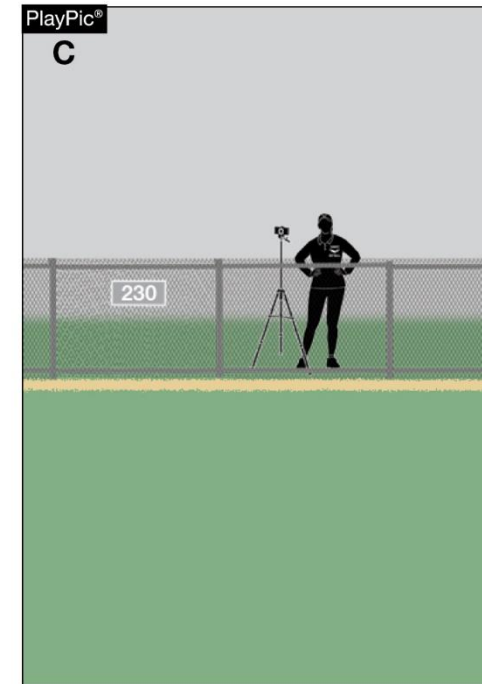
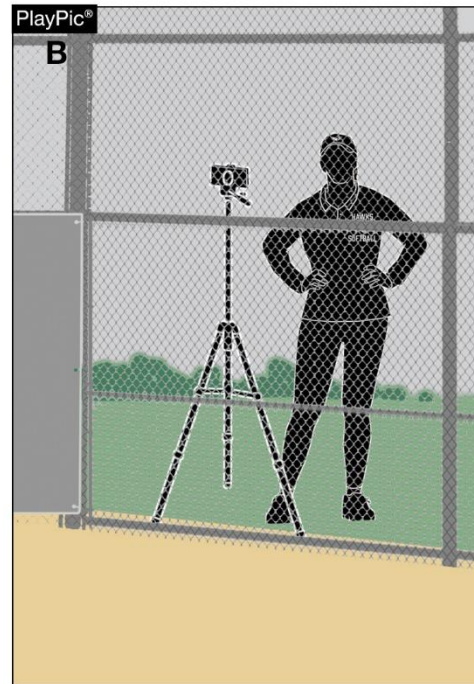
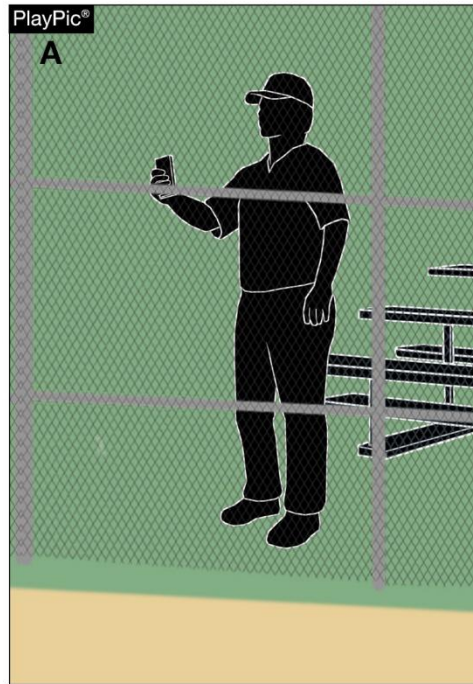


2024 NFHS SOFTBALL RULES CHANGES



OTHER EQUIPMENT

1-8-6



Electronic information may be transmitted to the dugout from anywhere outside of live ball area. However, electronic devices used for coaching purposes may only be utilized in the dugout.

UNIFORMS, PLAYER EQUIPMENT

3-2-3



Beginning January 1, 2027, uniforms may only bear a single manufacturer's logo, school name, school logo, mascot and/or the participant's name. Advertisements, messages, team slogans, etc., will no longer be permitted.

UNIFORMS, PLAYER EQUIPMENT

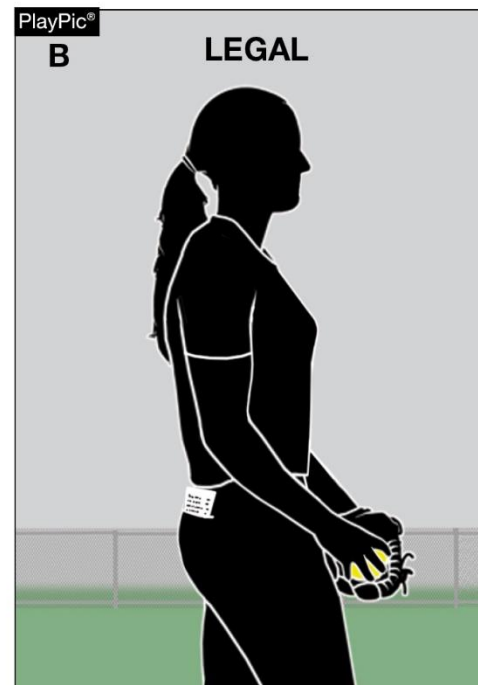
3-2-5



There is no longer a color restriction for headbands and ribbons. However, plastic visors and bandanas are still illegal.

UNIFORMS, PLAYER EQUIPMENT

3-2-7



A wristband with a playbook/playcard may only be worn on a player's wrist or arm or kept in the back pocket. It may not be worn on the belt. If a pitcher wears one, it must be on the non-pitching arm.

ENDING A GAME, PLATE UMPIRE 4-2-7 & 10-2-3e, h



The umpire may call (end) a game if playing conditions around the facility become unacceptable to safely continue the game.

PITCHING REGULATIONS (F.P.)

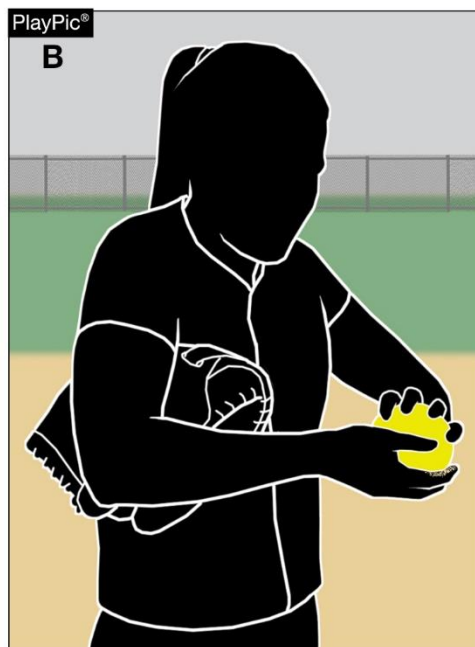
6-1-2c & 2-47



- The pitcher may now have both feet off the ground at the same time as long as both feet remain within the 24-inch width of the pitching plate and the pitcher does not replant the pivot foot.
- A replant of the pivot foot occurs when the pitcher pushes off the playing surface from anywhere other than the pitcher's plate prior to the act of delivering the pitch.

INFRACTIONS BY PITCHER (F.P.)

6-2-2



Pitchers may only use dirt, powdered rosin or comparable drying agents that are listed on the USA Softball's certified equipment webpage to dry the hand.

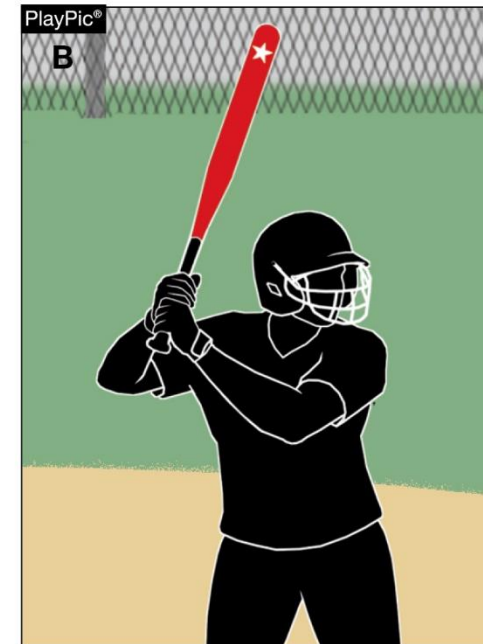


2024 NFHS SOFTBALL EDITORIAL CHANGES



BATS

1-5-1c & 2-4-3



Adds the words “when initially detected” to clarify what occurs when a damaged bat is initially discovered in the game.

BATTING AND CATCHERS HELMETS

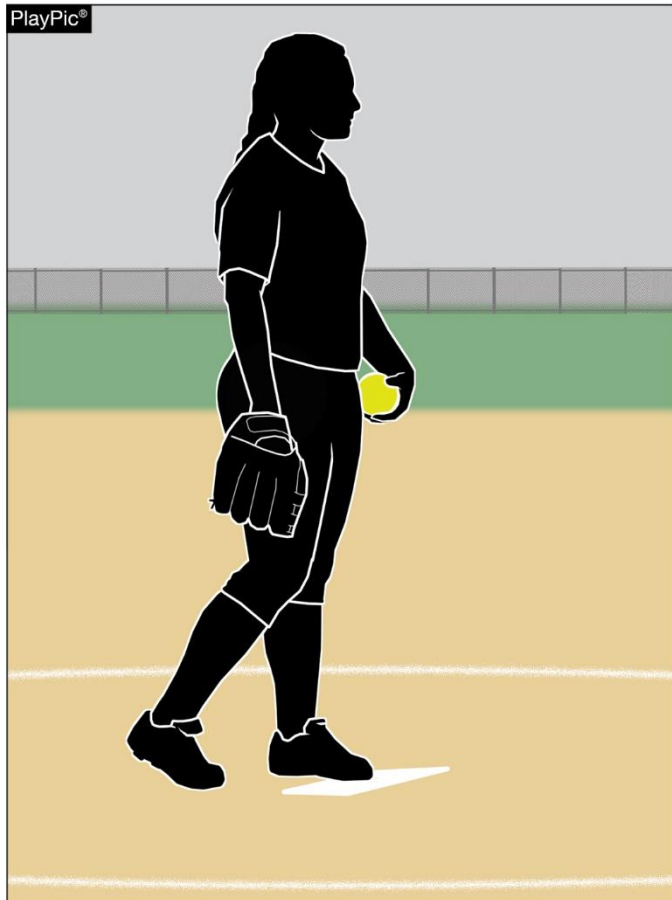
1-6-1 & 1-7-1

- Rule 1-6-1: Updates the current stamp used by NOCSAE for approved batting helmets.
- Rule 1-7-1: Updates the current stamp used by NOCSAE for approved catcher's helmets.



PITCHING REGULATIONS (F.P.)

6-1-1b



Adds the wording “in contact with the pitcher’s plate” to clarify where the pitcher is required to take (or simulate taking) a signal from the catcher.

POSITION AND BATTING ORDER

7-1-2 PENALTY 2

PlayPic®

A

NATIONAL FEDERATION OF
STATE HIGH SCHOOL ASSOCIATIONS
Official Line-up
Softball

DATE *May 7 23* TEAM *Union Eagles*

NO.	PLAYER	RE.	POS.
14	1 H. Abel		7
	SUB.		
9	2 D. Baker		4
	SUB.		
12	3 J. Charles		8
	SUB.		
44	4 G. Daniels		3
	SUB.		
32	5 F. Edwards		6
	SUB.		
17	6 D. Franklin		2
	SUB.		
24	7 M. George		9
	SUB.		
2	8 E. Hamilton		5
	SUB.		
19	9 K. Irwin		1
	SUB.		
	10		
	SUB.		
NO.	SUBSTITUTES	POS.	
6	E. Jackson		
11	H. Knutson		
28	D. Larson		
35	E. Matthewson		
1	D. Nelson		
CONFERENCES			
RUN	1 2 3 4 5 6 7 8 9 10		
OFF			
DEF			
COURTESY RUNNERS			
RUN	1 2 3 4 5 6 7 8 9 10		
P			
C			

TO RE-ORDER CALL: 800-776-3462



Changes the formatting in the penalty to clarify the effects of when an improper batter becomes a runner or is put out and the defensive team appeals to the umpire before the next pitch.

POSITION AND BATTING ORDER

7-1-2 PENALTY 3

PlayPic®

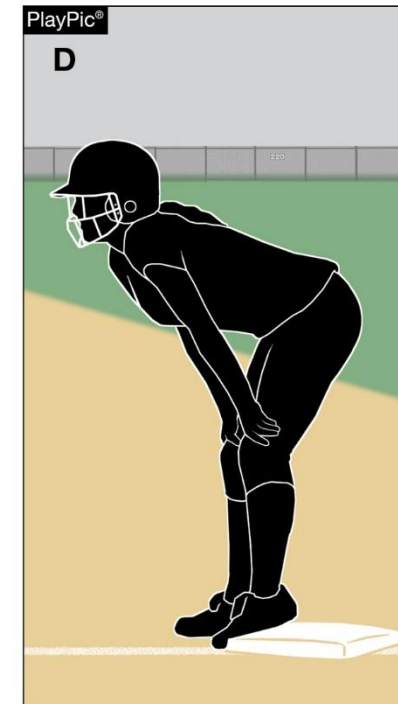
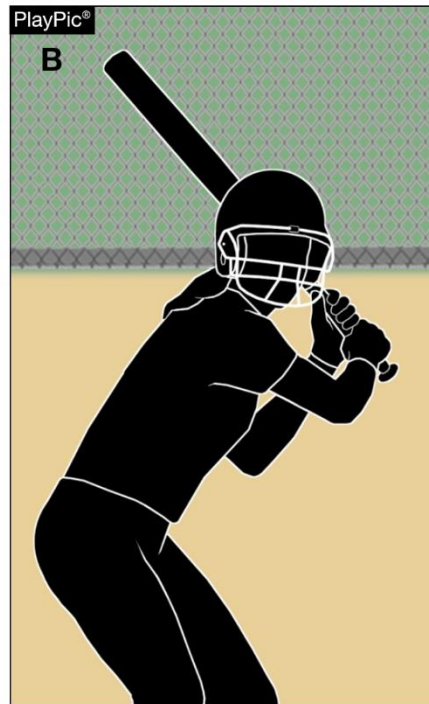
A

NATIONAL FEDERATION OF
STATE HIGH SCHOOL ASSOCIATIONS
Official Line-up
Softball

DATE May 7 23 TEAM Union Eagles

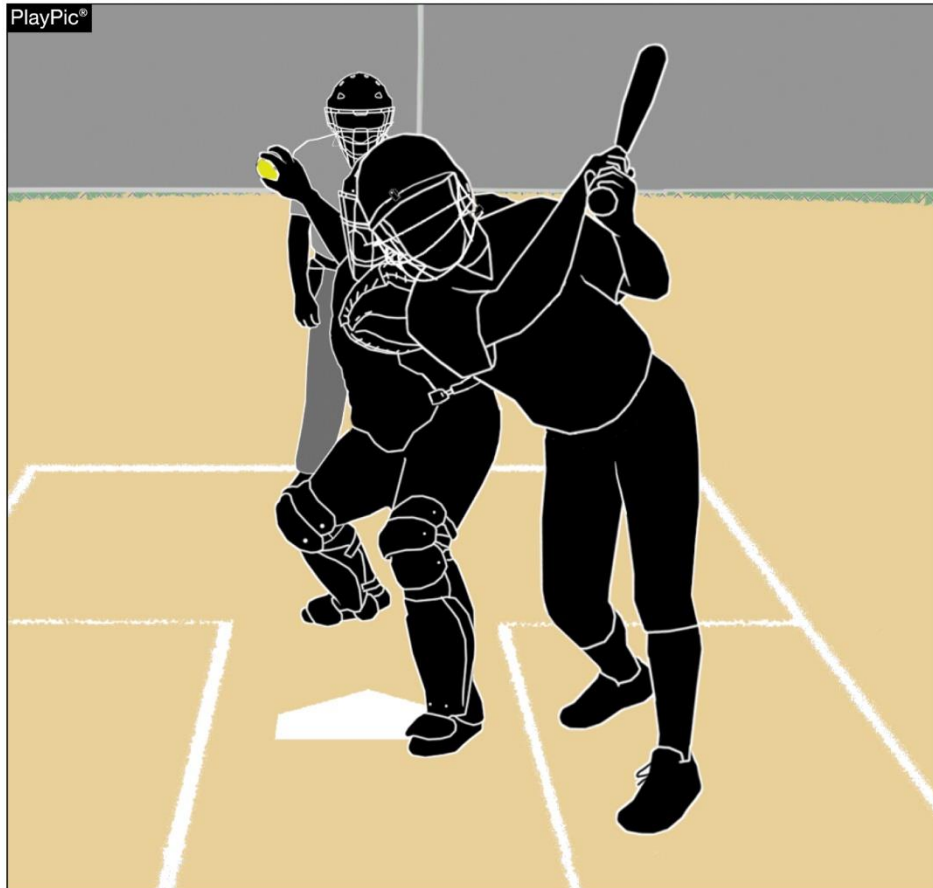
NO.	PLAYER	POS.
14	1 H. Abel	7
9	2 D. Baker	4
12	3 J. Charles	8
44	4 G. Daniels	3
32	5 F. Edwards	6
17	6 D. Franklin	2
24	7 M. George	9
2	8 E. Hamilton	5
19	9 K. Irwin	1
10		
NO.	SUBSTITUTES	
6	E. Jackson	
11	H. Knutson	
28	D. Larson	
35	E. Mathewson	
1	D. Nelson	
CONFERENCES		
CON	1	2
CONF	3	4
CONF	5	6
CONF	7	8
CONF	9	10
COURTESY RUNNERS		
CON	1	2
P	3	4
C	5	6
	7	8
	9	10

TO RE-ORDER CALL: 800-776-5462



Formats the penalty to clarify the effect for when an improper batter has completed their turn at bat and no appeal has been made before the next pitch.

BATTER IS OUT 7-4-4



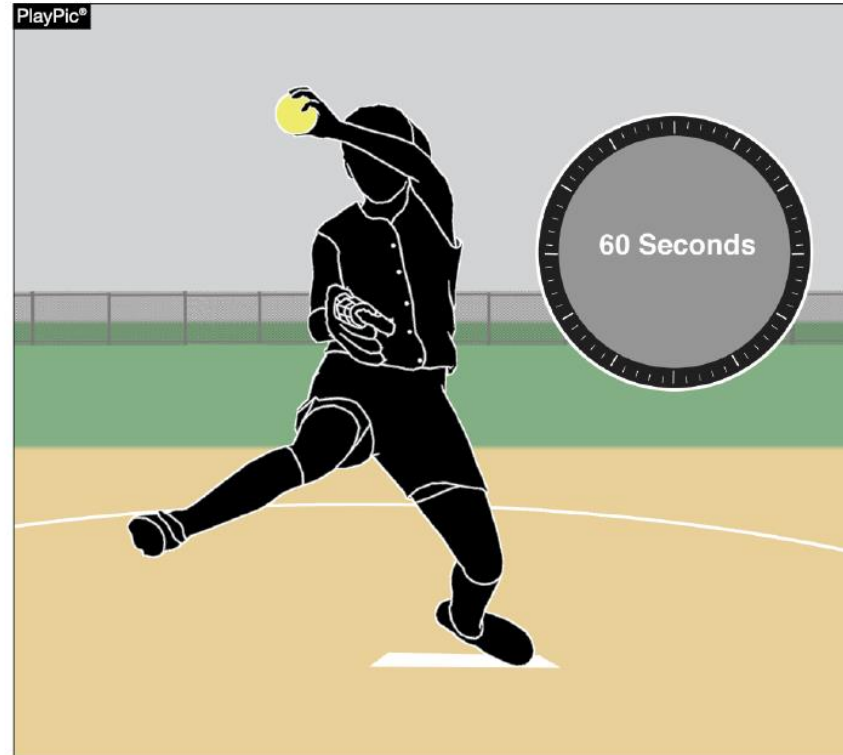
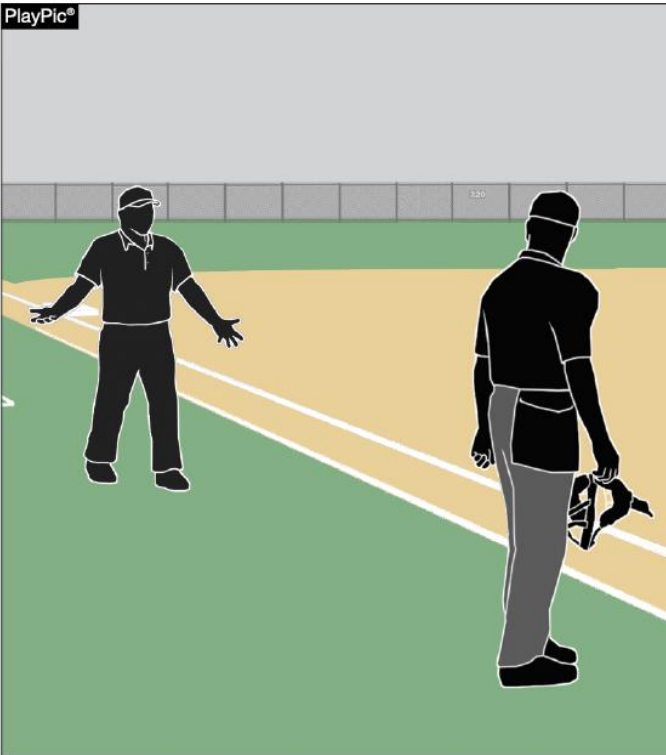
Formats the rule to clarify the various ways the batter can interfere with the catcher's fielding or throwing.



2024 NFHS SOFTBALL POINTS OF EMPHASIS



GAME MANAGEMENT



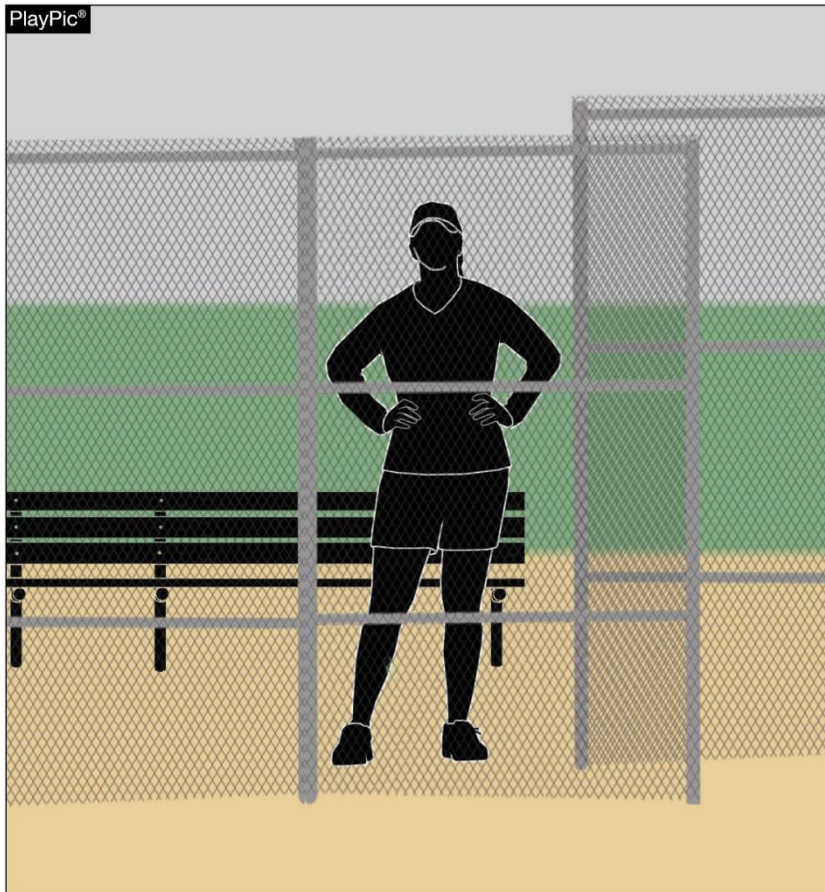
- Umpire and coach communication should be conversational, not confrontational.
- Professionalism should be followed by coaches and umpires to maintain a successful working relationship.
- Although umpires are not there to “rush” players, one of their responsibilities is to help maintain a good flow of the game.

UNACCEPTABLE CONDITIONS



- Umpire jurisdiction is limited to the confines of the field of play. Issues outside of the field of play such as spectator behavior is monitored and controlled by event management. Absent a designated event manager, the home team's head coach assumes this responsibility. However, if conditions become unacceptable for play due to spectator conduct, umpires have the authority to call (end) the contest.
- In addition to spectator behavior, other external conditions could result in the umpire having to call (end) the contest. For example, at the start of a game, a wildfire might be a safe distance with winds carrying the smoke away from the field. If these conditions change and result in conditions becoming unacceptable for play, it may result in an umpire having to call (end) the game.

UNREPORTED VS. ILLEGAL SUBSTITUTIONS



- An illegal substitute is a player who is ineligible to occupy a position in the lineup. This can occur when a player:
 1. Enters or re-enters the game without eligibility to do so (illegal re-entry).
 2. Re-enters the game in the wrong position in the batting order.
 3. Is the (F.P.) FLEX and enters the game as a batter or runner in a different position in the batting order than the DP.
 4. Violates the courtesy runner rule.
- All of these violations result in an illegal substitution and the offender is restricted to the bench/dugout for the first offense.
- In contrast to an illegal substitute, an unreported substitute is a player that could legally occupy the position they are in the lineup but has simply failed to report that they are entering the game. The first offense results in a team warning.

PITCHING MECHANICS: REPLANT



- A replant prior to the delivery would result in an illegal pitch.
- It is an illegal action if the pitcher slides their foot forward past the pitching plate pushing off to start their movement from a position in front of the pitching plate (no part of their foot is still in contact with or over the pitching plate).
- “Closing the hip,” is pushing with the pivot foot while delivering the pitch. Depending on the pitching style, the pitcher will either bring their pivot foot forward to square up toward the batter or they will tuck the pivot foot behind the non-pivot foot. This push is during the act of delivering the pitch and is legal.



OFFICIALS EDUCATION

CONTENT REMAINS FREE OF CHARGE



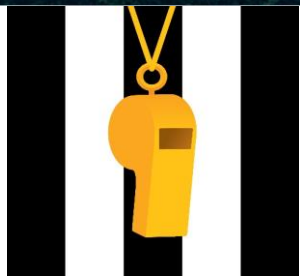
**TEACHING
AIDS**

**RULES
CHANGES**

DIAGRAMS

**VIDEO
LIBRARY**

**OFFICIALS
COURSES**





NJSIAA RULES MODIFICATIONS

Ending a Game

- **Rule 4, Section 2, Article 3 and Article 7 (p. 44-45)**
- Only the umpire may end a game.
- The 10-run rule: If after 5 innings of play, the visiting team is ahead by 10 runs, or 4 ½ innings if the home team is ahead by 10 runs the game ends.
- The 15-run rule: If after 4 innings of play, the visiting team is ahead by 15 runs, or 3 ½ innings if the home team is ahead by 15 runs, the game may be ended with the consent of both coaches and the umpire.

Tie-Breaking Procedure

- **Rule 4, Article 5-6 (p. 44)**
- At the top of the 8th inning and during each half inning used to enforce the tie breaker, the offensive team shall begin its turn at bat with the player who is scheduled to bat last in that half inning being placed at second base. A substitute may be inserted for the runner.





NJSIAA RULES MODIFICATIONS

- Double First Base CAN be used as long as BOTH teams agree during the pre-game conference.
 - Provisions for using the double first base will be sent out and posted on the BCUA website.
- Eye Black
- SubVarsity Games – Use of the Extra Hitter.

UMPIRE MECHANIC MODIFICATIONS

Pick-Off Play at First Base

- A pick-off play at first base is called by the plate umpire if the field official is in the “C” or “D” positions.

Third Base Coverage

- Aside from taking the lead runner into third base, it is permissible for the plate umpire to take third for a batter-runner’s extra base hit. This is reviewed during the pregame crew conversation and reinforced with on-field **VERBAL COMMUNICATION**.



NJSIAA RULES MODIFICATIONS

Working “The Rim”

- This mechanic is permissible in lieu of the “Button Hook” base umpire movement.
- Example: Nobody on base. “A” position field umpire. Fly ball or base hit to left or center field. Base umpire moves into fair territory along the grass / dirt cut out line or “rim.” Base umpire watches the batter-runner touch first base while jogging or walking briskly along with the batter-runner as she makes the base turn. If it is an obvious extra-base hit or long fly ball that may or may not be caught, the base umpire watches the touch and then cuts behind the batter-runner preparing for a play or the touch at second and/or third base (Unless the plate umpire verbally indicates he/she has the possible play at third). The base umpire must maintain sight of the batter-runner and the ball. A fly ball or base hit to right field shall revert the “A” position base umpire to the traditional “Button Hook” mechanic (Unless he/she goes out for fair/foul and/or trouble ball call).
- The Rim mechanic is permissible from all field umpire starting positions; however, maintaining sight of base responsibilities and ball location is essential.



NJSIAA RULES MODIFICATIONS

Check Swing Appeal

- In a two-person crew, it is permissible for the plate official to seek partner assistance after an appeal request for a pitch called a ball, regardless of the base umpire's field location.

